



**TECHNICAL TRADING
CORPORATION
COMPANY PROFILE
2024**

*Immerse yourself in our world of continuous
advancement and extraordinary
partnerships, enjoy
unprecedented heights of
success.*



ttc.co.ke



info@ttc.co.ke



+254 20 840 41 41

+254 111 041 700



ABOUT US

In January 2022, Technical Trading Corporation was launched by a trio of visionary engineers, each committed to reshaping the landscape of engineering, procurement, and commissioning (EPC). We deliver value-laden, innovative solutions across a myriad of economic and sectors. We're your partners in progress, your allies in innovation, understanding your unique needs and challenges is at the core of everything we do. We stand apart bridging critical gaps and solving complex problems that others don't.

Our commitment to excellence is not just a promise; it's demonstrated in every service we provide and every product we deliver. Our ascension journey marked by a relentless quest for knowledge, continuous skill enhancement, and a steadfast dedication to improving our processes and systems. This journey has positioned us as a leader in offering reliable, transparent, and customer-centric engineering solutions.

What sets TTC apart? Our unwavering focus on delivering not only high-quality engineering products but also unmatched customer service and operational excellence. This ensures total peace of mind for you, our esteemed partners. Our expertise is your assurance; we prescribe product characteristics with utmost precision and honesty, empowering you to make informed, safe engineering decisions.

In April 2022, TTC proudly became the official headquarters for LEO Pumps in Kenya, a world class pump manufacturer known for its superior material choice and user-centric design. Our MACE Industrial Equipment range offers an extensive selection of heavy-duty prime movers, fluid handling equipment, and power transmission products, setting new industry benchmarks.

In 2023, we embraced technological advancement by integrating a state-of-the-art ERP platform, enhancing our organizational efficiency and service offerings with features like service provider portal access and customizable dashboards. We're also leading the way in CSR, with a significant portion of our energy needs already being met by solar PV power, integrated with a smart grid-tie inverter.

Welcome to our world, where engineering excellence and customer satisfaction converge to create unparalleled value.

OUR STORY



MISSION STATEMENT

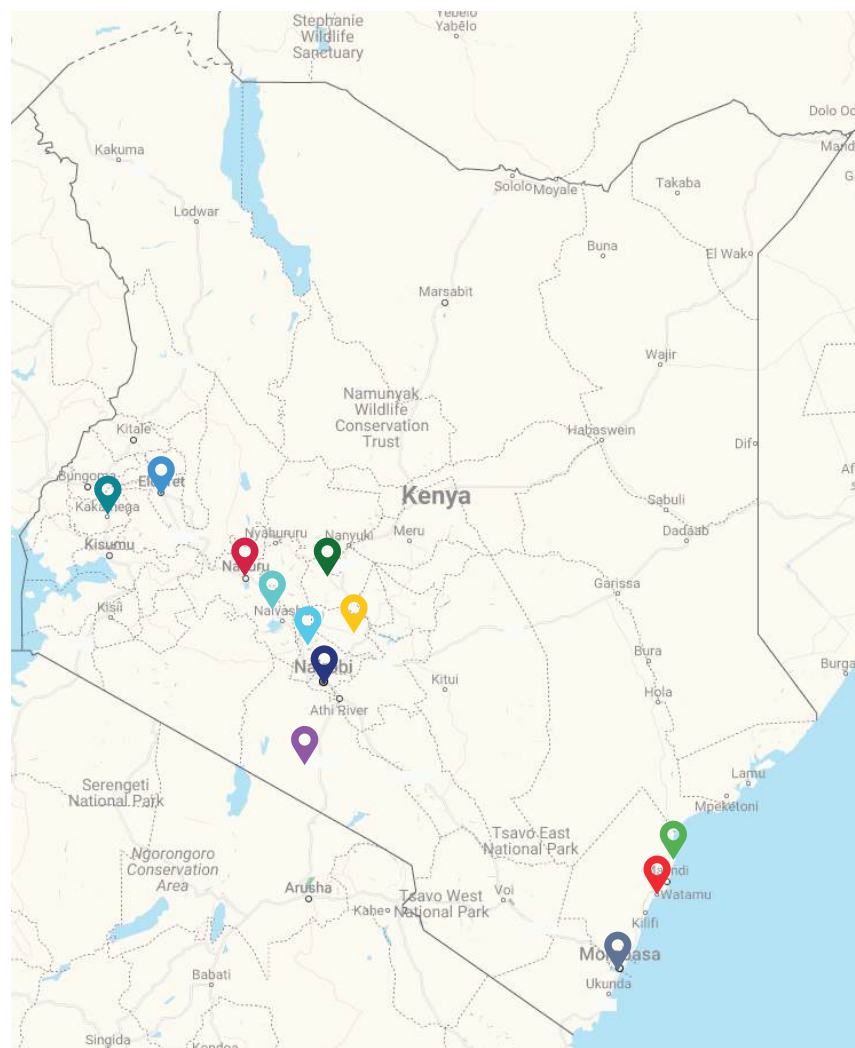
To ascend as the foremost authority in delivering unparalleled, specialized solutions across the realms of fluid handling, prime movers, power transmission, and energy products. Cater to a diverse spectrum of sectors and intimately understand and proactively anticipate our clients' needs. Build unwavering transparency at our heart while cultivating a foundation of trust and open dialogue with all our stakeholders while reliability should not just be a feature of our products, but a hallmark of our entire business practice.

We commit to fostering an environment where every individual is encouraged and supported to reach their fullest professional and personal potential. This commitment to growth and innovation will strengthen our position as a provider of exceptional and authentic value to every stakeholder we engage with.

DISTRIBUTION NETWORK

If you are a service provider in the water, prime mover, power transmission or energy industry, you deserve a reward for the value you bring to the market, the problems you fix, and the successful infrastructure you meticulously set up. We value you, know your worth.

Our competent team is capable of guiding the selection process based on an array of applications, demand considerations, and system constraints. Aside from offering well-made and researched products, dynamic technical and holistic marketing support is provided. Indulging in our service provider network assures you a lucrative atmosphere owing to our forward-thinking.



***Our present distribution network
(November 2023)***

- | | |
|------------|------------|
| 📍 Nairobi | 📍 Nakuru |
| 📍 Kajiado | 📍 Malindi |
| 📍 Naivasha | 📍 Thika |
| 📍 Gil Gil | 📍 Watamu |
| 📍 Ol Kalou | 📍 Kakamega |
| 📍 Mombasa | 📍 Eldoret |

***Reach out to see how you can
become part of our network today.***

SERVICE CORES

Our comprehensive suite of services encompasses the entire lifecycle of our products, ensuring end-to-end satisfaction.

1. Product Selection / Project Specification

Consulting is provided by our qualified sales engineers, for selecting products from a set of known or partially unknown parameters. Our honest intention is to assess the viability and then provide a solution to given requirements.

2. Installation

Professional installation and commissioning services are provided upon request.

3. Operation & Maintenance (O&M)

Entails annual maintenance contracts for fluid handling equipment, generators and prime movers.

4. Repair & Warranty

Our partners are guided through warranty registration forms and processes and successful qualification is dependent on the requirements being met.

Restoration of equipment is possible for all products within our portfolio. Products purchased from a third party are subject to review before actioning a repair agreement.



TRADING

- Retail
- Wholesale



ENGINEERING

- Installation Operation
- Maintenance (O & M)
- Repair & Warranty



PROCUREMENT

- Imports
- Local Market
- Back to Back Orders



COMMISSIONING

- Product Selection
- Project Specification
- Research & Development

WARRANTY & TECHNICAL SUPPORT PROCESS

It's important that our partners receive what you deserve, quality, authentic products. Check out the free verify tool found at the top right of our website, enter the product SKU (found on your invoice) along with your product's unique serial number, hit verify to find out if your product is genuine.

Your satisfaction and well-being are of utmost importance to us. Discover seamless support through our 'Help' tab, strategically placed for your convenience at the top centre of our website. From there, you may initiate an application for a product warranty claim investigation or report an event of concern that you encounter through the customer care tab. Reach out with any inquiries through our "Contact us" website tab.

Your trust in us is deeply valued, and we are committed to exceeding your expectations at every stage.



STEP 1

Claim/issue
Reported



STEP 2

Technical
Report
Evaluation Done



STEP 3 Action

Refunding, Replacing
or Repairing



LEO

Intelligent Flow For Good

**World
Class
Quality**

**Verified &
Tested
Products**

**After Sales
Support &
Care**

LEO GROUP, a dynamic and innovative high-tech enterprise, proudly stands on the national stage as a publicly listed beacon of technological advancement. Specializing in research and development, design, manufacturing, marketing, and exceptional customer service, LEO GROUP offers a comprehensive array of pumping solutions that set industry standards.

With a global footprint in over 140 countries, touching every single continent on the globe, LEO has consistently exceeded expectations, catering to the diverse needs of our global clientele.

Marking a milestone of excellence, LEO GROUP has produced over 60 million pumps in a 20 year span, a testament to our unwavering commitment to quality and innovation. This monumental achievement is backed by a robust team of over 4,000 dedicated employees, each contributing to our success in this dynamic world of pumping technology.

 **+254 711 624 284**

 **leopumps@ttc.co.ke**

LEO is a world-class pump manufacturer offering intelligent and forward-thinking solutions in the fluid handling space with a gigantic global footprint. LEO genuinely cares about its quality and after rigorously testing and installing thousands of pumps in Kenya we can confidently say LEO is an ocean ahead. LEO Kenya also offers distributionship for its products and service portfolio complete with technical, financial, logistical, and marketing support to high levels that provide superior value to all our partners.

Booster Pumps

Used for general-purpose pressure boosting and transfer of clean water or other liquids similar to water in physical and chemical properties.



Peripheral Impeller [APm]



Centrifugal [ACm]



Twin Impeller [2AC]



Centrifugal [CH]



High Flow [ACB]



Self Priming Jet [AJm- H]

Stainless Steel Pumps

These pumps feature a stainless steel shaft and body anti-rust treatment for a long life span along with in-built thermal protectors and are exceptionally quiet when installed correctly.



Centrifugal [AMS]



Self Priming Jet [AJm-S]



Horizontal Multistage [EMH]

Plumbing & Press Flow Controller Types (PS Series)



Dry running (pumping with no water) is a larger problem than it seems, causing cavitation and overheating which subsequently wears out the pumps seals, gaskets and bearings and simultaneously increases thermal stress on the pumps motor windings.



A



D



B

Aside from effectively controlling your water flow and desired pumping pressure ranges, they prevent dry running too. Once detected, the controller shuts off the pump and in the following 60 minutes will attempt to re-establish normal pump operation, if dry run persists, the controller shifts to alarm mode and the system restarted manually.



E



T



**Brass Foot Valve
[SS Mesh]**



**Float Switch
[3 m]**

Pressure Vessel & Accessories

Experience the epitome of water pressure control with LEO's exceptional water pressure vessels, Enables consistent pressure achievement throughout your system, eliminating line fluctuations, ultimately protecting and increasing the life of connected water pumps. All sizes are vertically oriented saving space and the 24 L model does not have a tripod base and instead screws into a multiway valve.



**Flexible Hose
[1"]**



**Pressure Switch
[PS-02B]**



24 Litres



**16 Bar
Variants for
200 & 300
Ltrs**

**60 / 100
200 / 300 Litres**

Circulation & Hot Water Pump



Capable of boosting hot water and even near-boiling water at room temperature and pressure (RTP) provided through solar hot water heating or boilers. Automatic variants (ARP) use a permanent magnet and frequency conversion control to adapt to system demands (variable system flows) or where minimum performance (night setback) is desired. All LRP impellers are made from Polyphenylene Oxide (PPO) or norly with a high heat resistance of up to 150°C, while LPM can resist up to 100°C



Multi Speed Circulation [LRP]



Automatic Circulation [ARP]



In Line [LPM]

Lift Station

Revolutionize sewage management with LEO in-built grinder lift pump. Capable of effortlessly shredding and disposing of solids, ensuring smooth and uninterrupted wastewater flow. Various inlet orientations - improve installation suitability for basements, boats, homes & communal spaces.

WC Series



Swimming Pool Pumps Range 0.8 - 2.2 kW [XKP Series]

Experience crystal-clear waters with our cutting-edge - quiet, LEO swimming pool pump Engineered for efficiency and durability it effortlessly circulates and filters water, ensuring a pristine and hygienic swimming environment. Its fluid handling capacity ranges from 15m³ to 30m³ per hour which for visual reference is a 5 x 3 x 1 metre pool and a 7.5 x 4 x 1 metre pool



Variable Speed Intelligent Pump



This elegant, whisper-quiet pump features a state-of-the-art permanent magnet motor (IE5 premium efficiency) with variable speed and constant pressure capability, you'll have complete command over water circulation, energy consumption, and water quality. An in-built smart control module incorporates dry-run, over-heating, over & under-voltage electrical protection.

MAC 550



**All in One
Plug &
Perform**

Engine Driven Pumps

LEO engine-driven pumps offer the invaluable advantage of operating independently from the mains electricity grid, proving to be indispensable on construction sites, farms, and mines. While solar-powered equipment has its place, solar energy is not always available and can be costly with batteries and inverters involved. These economical options are especially useful in emergency water transfer situations by providing a consistent water supply even when infrastructure is limited.



High Flow Series LGP 2 & 3"



High-Pressure Version 2 "



**Suction Hose
1.5 - 4 "**



**Plastic Foot Mesh
*Included with pump**



Lay Flat Canvas Hose
• Rubber lined
• PVC Lined

Submersible Shallow Well & Borehole Range



- The 5DW series mono-block pumps are equipped with 15 meters of cable and a control box attached. Ideal for shallow wells or seamless tank-to-tank water transfer.

- Complement your drilling projects with our comprehensive range of accessory equipment from intelligent control panels to submersible cables.

5DW Series



24 Months Warranty
T & C's apply

XR & XRS SERIES



- All submersible pump bodies are constructed with corrosion resistant AISI 304 stainless steel.

- XR series are equipped with floating plastic impellers that efficiently handle silt (to a degree) improving longevity in mildly turbid waters.

- XRS have stainless steel impellers.

- 4 & 6" Submersible pumps available.

Drainage & Garden Series

LEOs submersible pumps are compact and efficient, used for wells and minimal impurity water pumping such as is gardens or ponds. Never worry about a flooded basement, construction site flooding downtime or weak fountain performance ever again.



[STK]



[SPm]



Pressure Pump [XKS]



Drainage [QDX]



Fountain Pump

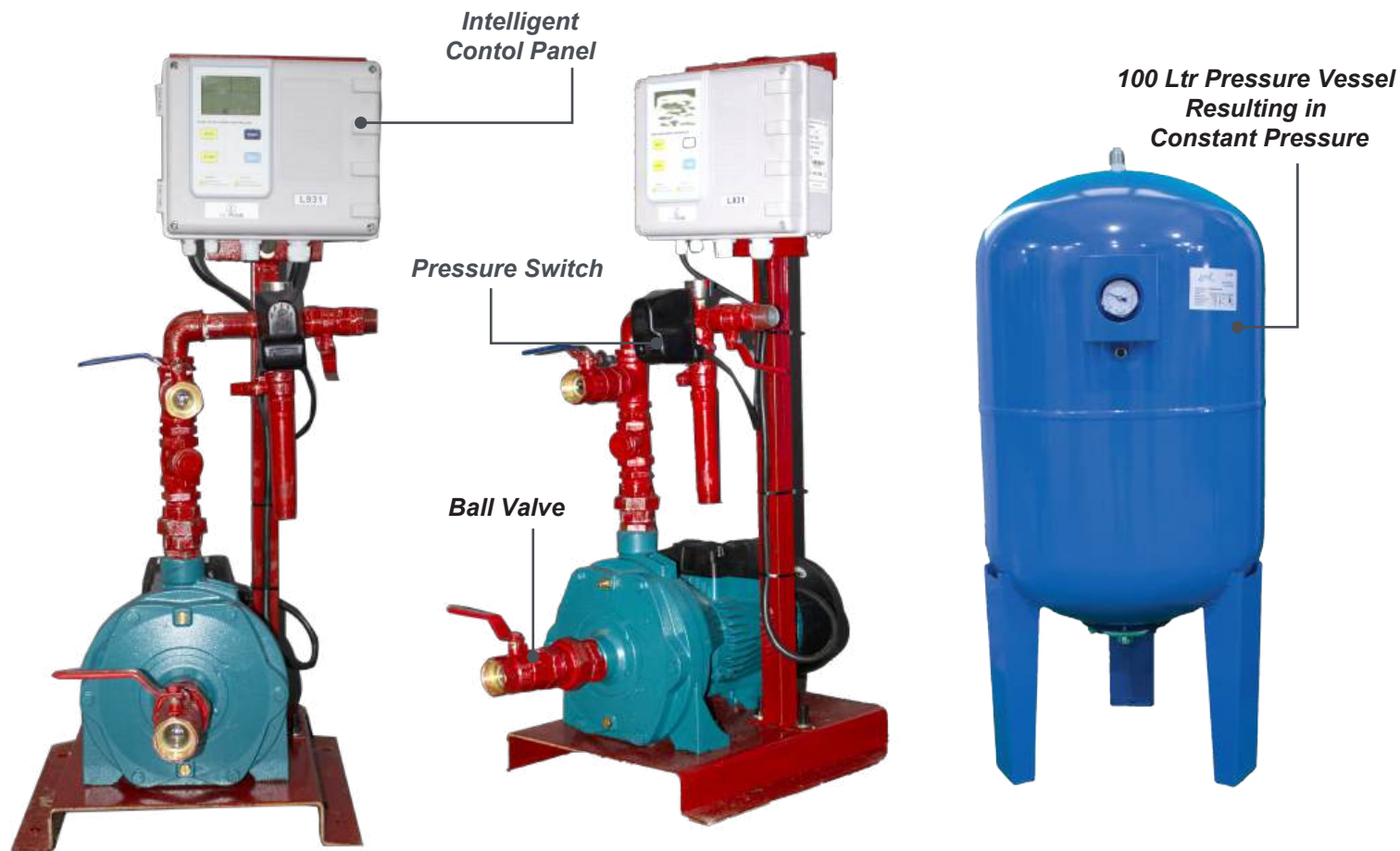
Duty & Standby Vertical Multistage Booster Set

LEO BWS systems are the ideal solution for commercial spaces and reverse osmosis plants providing high water flows and high pressure, a trademark of LEO multistage pumps. These feature energy saving IE3 efficiency motors and all wet parts are made of corrosion resistant stainless steel. Upgraded models feature intelligent variable frequency drives to further optimise power consumption and performance (see our projects for a real installation we executed flawlessly).



Fire Hose Reel Booster Set

Fire safety is essential, and you need the confidence to know your safety systems will work in time and well when you need them the most. This was the understanding that developed this fire hose reel set with an intelligent control panel connected to a pressure vessel. Dual, triple and quadruple pump sets can sync to handle higher loads.



Firefighting equipment needs to work when it counts. A jockey pump, duty pump, and standby fire pump are key components in a fire protection system, designed to maintain and supply water pressure for fire sprinklers. The jockey pump is a small, auxiliary pump that operates continuously to keep the system pressurized. Its primary function is to make up for minor leaks or pressure drops in the piping, preventing unnecessary cycling of the larger duty or standby pumps. This ensures that the system pressure stays at an optimal level, ready for an emergency without frequent activation of the larger pumps, which could lead to unnecessary wear and tear.

The duty pump is the primary pump responsible for supplying water to the fire protection system when a fire is detected. If the duty pump fails or requires maintenance, the standby pump is designed to activate as a backup, ensuring continuous water supply in emergencies. This redundancy is critical for fire safety, as it provides assurance that the system will work even if one component fails. Together, these three pumps ensure that fire protection systems are reliable, reducing response time and preventing system failure during a fire, which could otherwise lead to catastrophic losses.

Our company provides expert technical consultancy in pump selection and design, ensuring the most efficient and reliable solution for your fire protection needs. With in-depth knowledge and industry experience, we can guide you through the process, from choosing the right pump to meet your specific requirements to ensuring compliance with safety regulations. Following the design phase, we also handle the supply, installation and commissioning of the complete set, delivering a fully integrated fire protection system tailored to your facility.

Built to International Standards



After Sales & Maintenance Service

Technical Product Selection Consultancy



**WORLD
CLASS
QUALITY**

**VERIFIED &
TESTED
PRODUCTS**

**AFTER SALES
SUPPORT
& CARE**

MACE Industrial Equipment, stands as a leader in industrial-scale fluid handling, prime movers, and power transmission. We are committed to providing technically advanced, bespoke solutions for each unique requirement.

Our focus extends beyond supplying robust, long-lasting products and our customer-centric service sets MACE apart as a trusted partner in industrial equipment solutions. A team of highly skilled engineers and experienced technical sales personnel, excels in delivering insightful, customized recommendations that align precisely with your needs.

 **+254 707 959 078**

 **mace-equipment@ttc.co.ke**

Industrial Fluid Handling Series

End suction pumps are versatile general-purpose pumps capable of carrying water up to a temperature of 85°C. Vertical & Horizontal multistage pumps are capable of high pressure and head pumping, vertical being especially useful in cases where space is a limiting factor or where its stainless steel construction and anti-corrosion properties pose an advantage such as in reverse-osmosis plants. While horizontal multistage pumps offer similar benefits and use cases, they are economical and stand out when the delivery point of a line is unusually far away from the source e.g. farming applications.



End Suction Pump



Horizontal Multistage

Specialised Pump Assemblies

Our organization provides bespoke solutions for fluid transfer. These may take the form of constant pressure systems such as fire fighting, duty & standby systems or engine-driven pumps for example. Our expertise allows variable speed frequency drives to be paired with such systems for energy conservation and device protection. MACE intelligent control panels provide a myriad of electrical protections while simultaneously allowing multiple input methods such as electrode probes, float or pressure switches and transducers.

Pump impeller trimming services are also offered enabling higher efficiency pumping at a given head and flow metric.



***End Suction Long Coupled Assembly
Wet End in Stainless Steel Finish***



***Variable Speed Geared Motor
& Gear Pump Assembly***

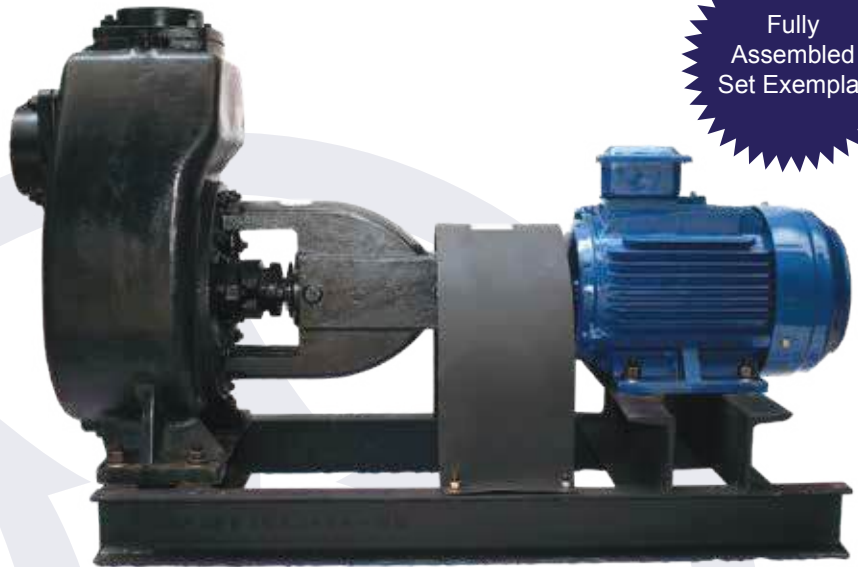
Open Impeller Pumps

Capable of transferring liquids with large particulate content such as waste water at high flow rates. Their ease of maintenance makes them a popular choice in off-grid uses in farms for transferring seeds and fruits suspended in water.

FMMP Series



1" - 6"
Outlets
in range



Fully
Assembled
Set Exemplar

Vacuum Pumps

Use an off-set rotor to create a liquid ring which is able to compress and expel gas. A significant pump advantage is the lack of metal-to-metal contact, eliminating the need for regular lubrication. Applications include, but are not limited to; wood treatment, pharmaceuticals,

**Vacuum Pumps
[2BV Series]**



Dosing Pumps

Used to precisely inject small volumes of an additive into a flow of water, steam, or gas such as a chlorinated compound into swimming pool water, fertilizer into irrigation water, in the petroleum, food, pharmaceutical and water treatment industries. Ours are equipped with a smart interface displaying stroke frequency and the multilayer anti-acid diaphragm promotes a long pump lifespan.



JLM Series



KD Series

Coolant Circulation Pump

Typically immersed into tanks and used to circulate cooling lub-ri cant or heat-dissipating liquids in contact app-li cations such as metal cutting or trimming e.g. lathe, bandsaw, and CNC machines.



JC Series

Positive Displacement Pumps

Liquids have a range of properties and their differences are exaggerated under various temperatures and pressures. For viscous liquids, regular pumps are impractical, however, MACE positive displacement gear pumps succeed here and are largely unaffected by priming losses.

Internal Gear

MACE internal gear pumps provide continuous, pulsation free flow due to the axial entry of the fluid, display low vibration and noise during operation. A user friendly design promotes maintenance ease with minimal disruption to the pipeline.



MACE high-pressure fuel injector pumps capacity range is 300 LPH to 1,500 LPH

Rotary Gear

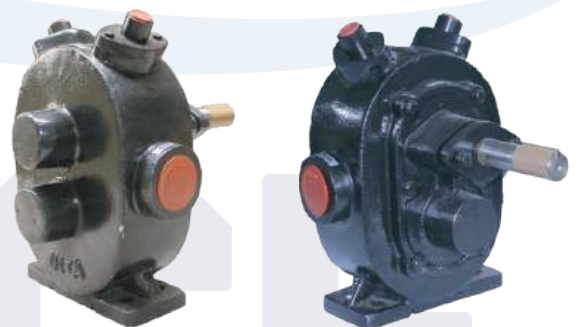
MACE gear pumps offer constant and high pressure fluid handling capabilities, especially when accurate metering and reliability are paramount. Typical transfer use cases are; fuels (hydrocarbons), mineral & lubricating oils, inks, paints, colours, and varnishes.

***Size Range
0.5" - 3"***



Additionally, the high-grade stainless steel variant caters to hygienic transfer pumping needs such as honey, milk (dairy products), chocolate, edible oils, pastes, molasses, sugar syrup, plant oils, and animal fats.

***MACE Stainless Steel Variant
(Sizes 0.5" - 2.5")***



Jacketed Variant (Sizes 1.5" - 3")

MACE Gear pump assemblies use durable transmission couplings and connect to explosion-proof, foot-mounted (B3) or geared motors. Bitumen pumps for instance, require high amounts of torque and typically need to be run slower than other gear pumps, MACE variable speed geared motors eliminate external gearboxes solving the high torque requirement in a more minimalistic setup saving space and can pair with variable speed frequency drives.



Long Coupled & Steel Base Frame

Industrial De-watering Submersible Series

A high-quality, huge range of submersibles is available catering to a huge number of use cases. Our VH series has a vortex impeller that allows it to handle dirty water and prevent it from getting clogged easily while the KBD series has an agitator at the inlet and is capable of pumping slurries. QXN series are used to de-water in scenarios that need exceptional performances of flow rates and pressures.



VH Dewatering Series
(Vortex Impeller)



KBD Slurry Pump



Dewatering (QXN)

Sewage Submersible Series

Two sub-sets comprise our main range, the B & G series. B series is an open channel impeller that is capable of pumping soft raw sewage. While the G series is equipped with a grinder at the bottom emacerating contaminants such as gloves, clothing, human waste, cosmetic products etc. preventing plumbing blockages.

Grinder Series
Sewage Pumps



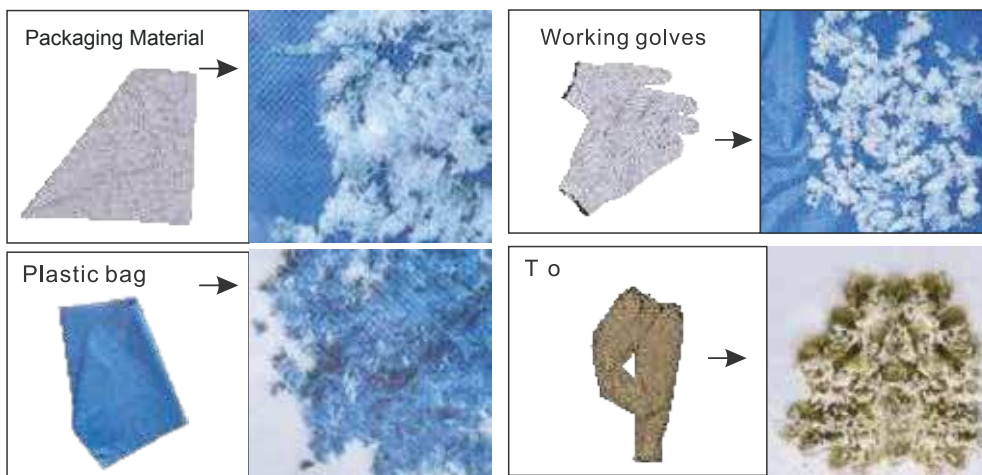
B Series
Sewage Pumps



A Typical Sewage Plant



GRINDING CAPABILITY OF G SERIES PUMPS



Quality in the context of this pump means no contaminant is spared, reducing the likelihood of clogged piping, plumbing maintenance and down time experienced.

MACE Borehole Accessories

Anyone can dig a hole, but can you get the water out in a safe and sustainable manner is the question? These essential accessories are used to equip boreholes and we have nothing but the highest regard for quality with pure copper submersible cables and custom made borehole covers for a professional and neat installation.



Column Pipes [1.25" - 3"]



**Air Line Pipe
[1" x 6 meter]**



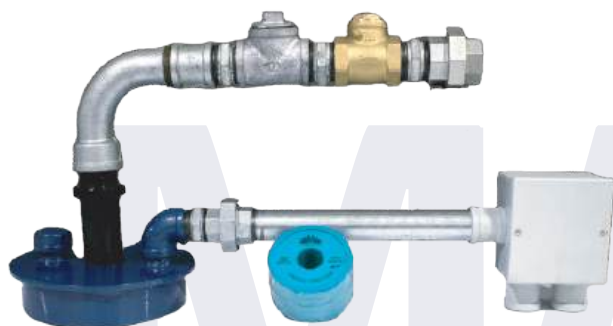
Adaptor Sets [1.25" - 3"]



**Splicing Kit
[Capacity up to 16mm²]**



Float Switch [3m Cable]



Borehole Covers & Sundries

- 6" Diameter CNC Machined
- Junction Box :150 x 150 mm
- Thread Tapes Included
- Adaptor Set Seat Rest Design



Cable Ties



**Insulation Tape
[19 mm x 0.2 mm x 25 m]**



**Analogue Water Meter
0.5" - 2" Threaded Connection
2.5" & 3" Flanged Connection**

MACE Intelligent Electrical Controls

Uses advanced software to control single, dual or three pump setups at a time depending on the model chosen. Can be retro fitted to an existing system or part of a new installation. Device offers a range of protections including but not limited to ; dry-run protection, under and over voltage arrest, phase failure protection and repeat start protection. A live LCD display to show connected peripherals and technical data. Controller has a float switch and electrode probe connection to trigger when a connected liquid storage tank is full.



AVS [1 & 3 Phase]



Submersible Cable [4 Core]



Intelligent Controller [Single Phase]



Electrode Cable [2 Core]



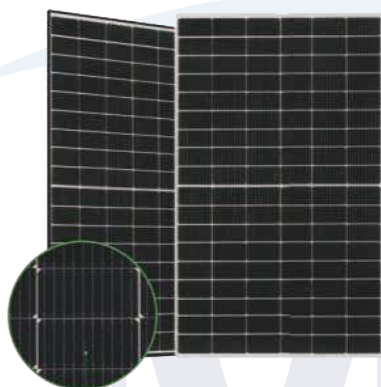
Intelligent Controller [Single, Duplex & Triplex]



Electrode/Water Probes

Solar Panels & Accessories

You're orchestrating a transformation of sunlight into sensational savings. Monocrystalline panels are more efficient than polycrystalline ones!



Solar PV Panel [Monocrystalline]



Solar Pumping Inverter



Solar Combiner Box



PV Disconnect Switch



MC4 Connector



Lightning Arrestor



Earth Rod & Clamp

PRIME MOVERS

Consider the extensive service life of a motor, spanning thousands of hours. It is clear that any opportunity to reduce operational costs would be valuable. MACE's foot and flange mounted electric motors (B3 & B5) are prime examples of premium efficiency IE3 motors and their ability to convert electrical energy into mechanical power results in significant energy savings.

Foot Mounted Induction Motors

1500 - 3000 RPM
Variants Available



1 Phase

Heavy Duty Construction



3 Phase

Special Types

Explosion-proof motors are an indispensable component in chemical, oil and gas industrial where the presence of flammable gases, dust, or vapors poses a significant safety risk. It ensures the safety of personnel and prevents potential ignition sources that could lead to catastrophic accidents.



Flanged Induction Motor [B5]



Explosion Proof Motor

**100 %
Pure Copper
Windings**

Geared Motor

MACE is complete with in-line and perpendicular output (NMRV) geared motors that offer versatility, allowing customization to suit specific industry needs by regulating speed and torque, ensuring machinery operates at peak efficiency while minimizing wear.



**Adjustable Speed
[200-1000 RPM]**



In line



NMRV

MACE takes pride in offering power transmission products that prioritize longevity, meeting the most demanding industrial needs and extending service life.

Sprockets & Roller Chains

MACE sprockets have undergone a tooth hardening process making them more resistant to wear and chains are produced in five meter rolls.



Couplings & Associated Insert Rubbers

Couplings and pulleys are all created using CNC machinery achieving a high precision finish, important for balance and equipment safety given the pulley is typically being rotated thousands of times per minute.



Pulleys & Accessories

MACE taper bush pulleys are re-usable as the central bush can be changed to accommodate various shaft sizes. An accidental damaging blow to the bush structure would not result in the pulley body cracking.



TECHNICAL PROJECTS

Multi LEO BWS System Nairobi, Kenya



We are pleased to showcase the exemplary installation of an advanced LEO BWS pumping system, meticulously designed for optimal application in commercial edifices including apartments, shopping centers, hospitals, factories, and manufacturing plants.

This project encompassed the integration of three sets of vertical multistage pumps, each set consisting of three units constructed from stainless steel grade 316 to afford exceptional corrosion resistance and longevity.

These units were ingeniously connected to individual variable speed frequency drives, enabling precise control over water pressure, thereby ensuring peak operational efficiency and a significant reduction in energy consumption. Furthermore, each set was complemented with its own pressure vessel to bolster system efficacy and dependability.

This is our dedication to implementing championing energy efficiency and accommodate the sophisticated requirements of commercial infrastructures.

CUSTOMER TESTIMONIALS



Mohamed's Engineering Supplies Ltd.

"As a distributor of water pumps and electric motors, partnering with this company has been a game-changer for our business. Their high-quality products are consistently reliable and efficient. The level of support and expertise we receive ensures that we can provide the best solutions to our customers, maintaining our reputation in the market."

Techwin Limited | Dairy Equipment Supplier

"Our acquisitions of geared motors from their company have been met with commendable service and products of exceptional quality. To date, we have experienced no instances of faulty motors being returned by our clients, attesting to the reliability and excellence of their offerings."

By Dennis Juma



PUMPS | SOLAR | WATER TREATMENT

Technical Hands Limited | Water Service Provider

"Technical Trading Corporation provides quality products as they always meet our customer expectations with no failure."

Collaboration Engineering Solutions & Products Ltd

"There was great customer service and quality of products made work very easy & smooth. Looking forward to the continuous support and work with the Technical Trading Group."



REACH US

Located in the heart of Nairobi's bustling industrial hub, we're strategically positioned to deliver across the entire region of East Africa.



**45 Pemba Street, Off Lusaka Road, Industrial Area
Nairobi, Kenya**



ttc.co.ke



+254 20 840 41 41



info@ttc.co.ke